



### A rchitecture E nvironment W orklife

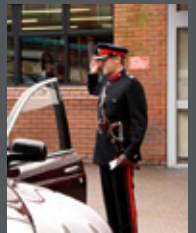
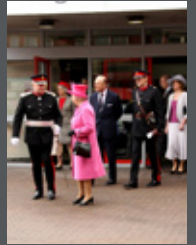
#### 'Handing Over The Reins'

**AEW are pleased to announce the appointment of Steve Burne as Managing Director.**

Steve has been promoted from the role of Director in recognition of his 14 year career within the practice, and his contribution to everyday management of the office. In his new role as MD, he will be responsible for leading the firm into the next phase of its business restructuring plan, which includes to diversify into other sectors whilst continuing and developing the relationship with our existing clients.

Chris Wewer, founder of the practice has been appointed as Executive Chairman of AEW and his recent appointment as High Sheriff of Greater Manchester, along with Steve's drive and ambition has made this the perfect time to hand over the reins.

Chris and the management team will be giving Steve their full support during the challenging and exciting times ahead.



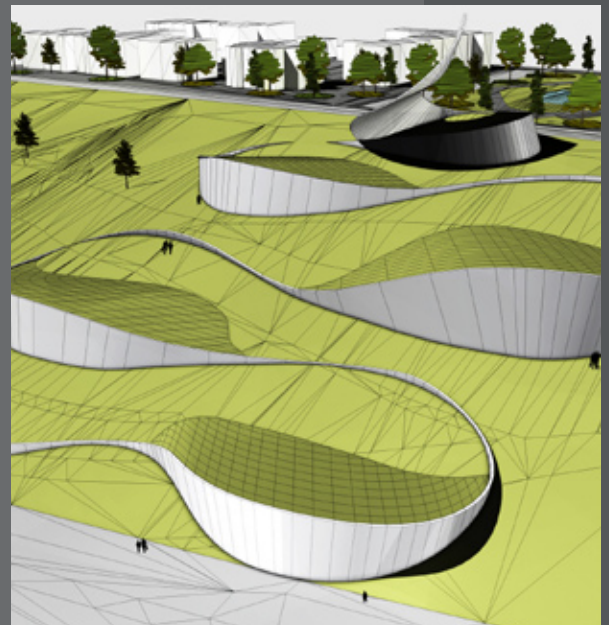
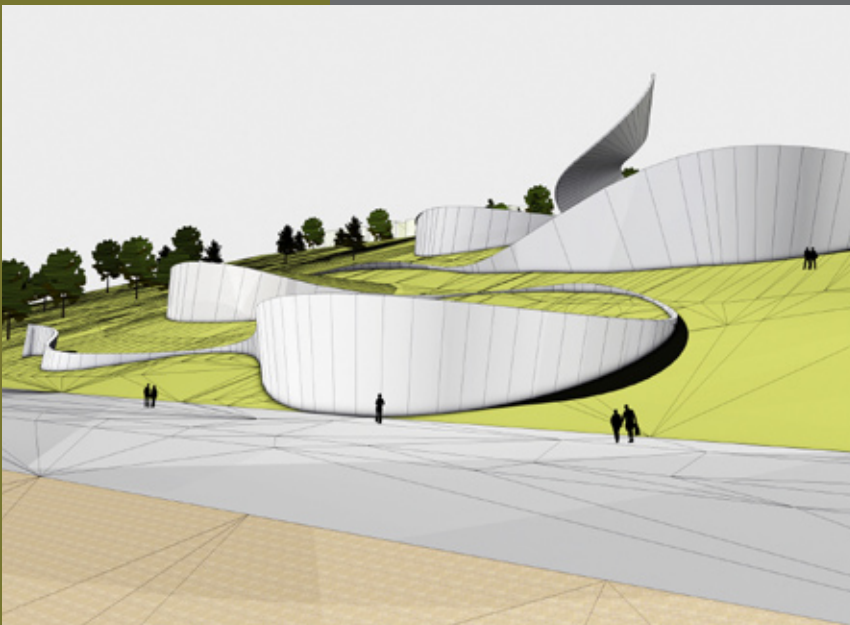
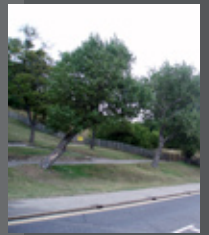
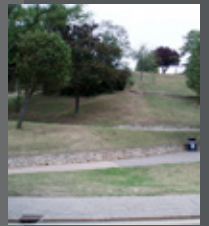
#### Southend-on-Sea Museum Commission

AEW's very unique and site specific design concept was a contributing factor in securing the contract to design a new £45million Museum project for Southend-on-Sea Borough Council.

Beating over 65 national and international experienced practices, AEW and their consultant team, Turner & Townsend and Buro Happold, were selected following a three stage competitive process.

The new museum is to be built on Southend's Cliff Gardens and is set to become a nationally significant tourist attraction. Hailed as possibly the most spectacular discovery of its kind during the past 50 years, the treasures of a Saxon Princely burial chamber discovered in Prittlewell in 2003 will be amongst the collections and the new Museum will also be a major cultural centre housing collections being held at Southend Central Museum and the Beecroft Art Gallery, Westcliff.

AEW believe this commission represents a major milestone in our aim to strengthen and grow our design service.



## Ronald McDonald House Charities



Manchester

AEW are continuing to work closely with Ronald McDonald House Charities on a number of projects across the country. Construction work is progressing well on a 60 bed House at Birmingham Children's Hospital, which is due for completion in November 2009. Planning applications have been submitted for a 28 bed House at the Royal National Orthopaedic Hospital, Stanmore and a 20 bed House at Birmingham Women's Hospital, both have been recommended for approval in August.

Proposals are also being finalised for 60 bedroom House at the new Manchester Children's Hospital, with a full planning application due in September, which will include provision for a second phase of the development to provide an additional 35 bedrooms.

The RMHC buildings all feature a terracotta rainscreen cladding system in a palette of greys, greens and white. This not only provides a very animated building, but also a unique identity that the Charity are keen to promote throughout their national building programme.



Stanmore



Birmingham Women's



Stanmore



Manchester

## AEW Annual Staff Presentation

One year on from delivering AEW's 5 year plan, Chris officially handed over the reins to Steve, who went on to review the objectives of 2008. Some of the more significant achievements for AEW during 2008 have been;

- Gaining ISO9001 Accreditation & Securing commissions in new sectors for the practice.
- Increasing the design profile of the practice by winning the Southend-on-Sea Museum competition.
- Increasing turnover and profitability by 10%.

Steve thanked all staff for their effort & commitment in what has been a challenging year. He assured staff that the Directors will continue to ensure the stability & well being of the practice moving forward by making tough decisions & through pro-active management. Most of all he re-iterated the need to support and look after our existing clients in these difficult times.

Steve also to outlined our objectives for the year ahead and including;

- To develop and implement an AEW Environmental Policy by December 2009. To develop and implement a sustainability strategy for our projects by December 2009 and to gain Investors in People Status.
- We need to build on the good work to improve our design reputation and this is backed up by the new mission statement **"To design and deliver buildings and spaces that exceed all expectations"**

Staff were treated to a demonstration of how AEW's new website will look when it is launched. (right)

- The case studies featured within the new website demonstrate some of our more recent schemes and the website, we believe, will express our commitment to our client and consultant teams through high quality, sustainable architecture.

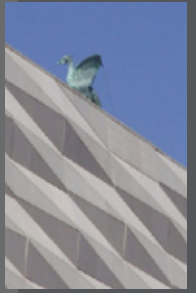
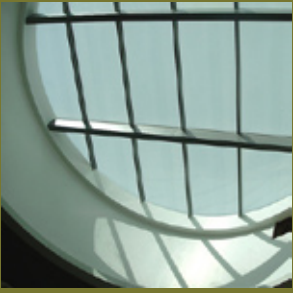
The annual event, held at AEW's offices, went really well and all staff finished the night drinking and frolicking around Manchester City Centre. One Director in particular only lasted half an hour within the office the next day!. (Guess who!)



## The National Museum of Liverpool nears completion

Work is progressing well at Liverpool. The exterior is virtually complete in terms of stone and glass and the ramps are coming on well, becoming substantial elements at either end of the building. It's now full steam ahead on checking all the pre-cast concrete and precast units to the complicated Amphitheatre steps and ramp surfaces.

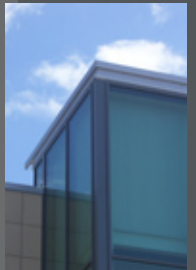
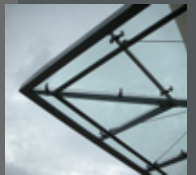
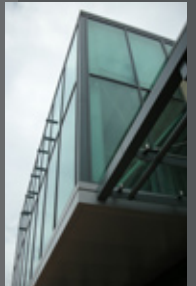
The interior is also coming together well and nearly all the ceilings are in. The central staircase is looking simply stunning, and despite its huge size, seems to soar through the space like a vast white ribbon unwinding from the skylight. This is the building's piece de resistance and we can't wait to see the timber steps installed and see it in use.



## Anlaby, Hull

AEW have recently completed twin retail developments in Sheffield and Hull. The concept behind the brand adds a European flair to the vision, as high quality pedestrian areas reflect the fact that ninety percent of the shopping experience happens outside the shop! .

The schemes include projecting signage boxes at first floor level to highlight entrance positions and a slender glass canopy connecting the units. The contemporary design incorporates black stone and glass to develop a building that would give the client a "visual brand identity" to which future schemes would be linked.



## AEW Over 30's Vs Under 30's Football Match



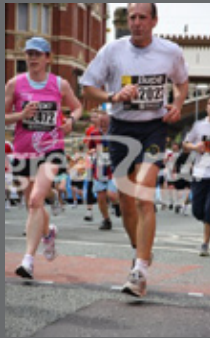
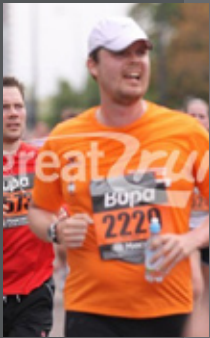
This keenly anticipated match had all the ingredients of a classic: talented players, visionary management, good weather and several cans of WD40 to stop the squeaking of our older player's knees.

After a close, hard-fought contest involving plenty of blood, sweat and (unconfirmed reports of) tears, the Under-30's edged a narrow 15-5 victory - despite at one point having one player against five. Neutral bystanders blamed the Over-30's downfall squarely at Associate Director Alan Lamb's feet after his spectacularly missed penalty early on in the game.

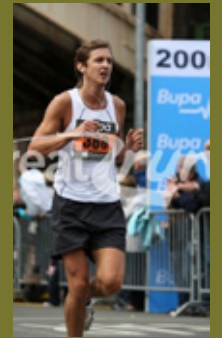
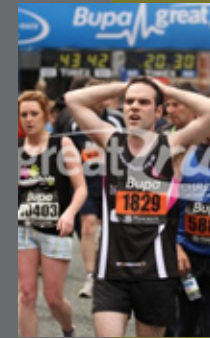
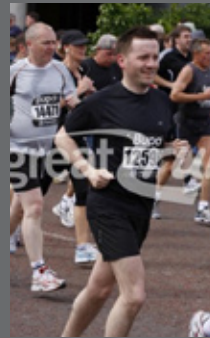
The evening finished with a few beers and a curry with the supporters. The squads are already looking forward to the rematch in the near future!



## Manchester Run 2009



AEW turned out 13 entrants for this year's Bupa Great Manchester Run. With ages ranging from 24 to 60 years, we managed to raise some money for worthwhile charities, and we got round in time's ranging from Ross Huntingdon's fantastic 39 minutes (Pictured far right) to 1.02 hours. A great effort was put in by all who took part and those who turned out to support the event.



## RMHC Snowdon Challenge



15 members of AEW embarked upon the challenging but enjoyable ascent of Mount Snowdon via the Miners Track followed by a descent along the Llanberis path on Saturday 6th June.

Completing the walk within 5 hours, AEW nearly doubled their target of £2,500 to secure over £4,220 for RMHC who help improve the quality of the life of desperately ill children and their families through the provision of free 'home away from home' accommodation at children's hospitals around the country.

We would like to take this opportunity to say a massive "thank you" to all our sponsors and we look forward to the next challenge.



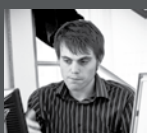
## AEW would like to welcome



Craig Wilkinson  
Technician &  
IT Support



(Welcome Back to!)  
Eamon O'hara  
Architectural  
Assistant



Phil Hepworth  
Architectural  
Assistant



Lucy Taylor  
Admin  
Assistant

## Bigmouth Strikes Again



AEWs Teemu Metsala sang with the nationally acclaimed Manchester's Sing Out Choir to a sold out Salford's Lowry theatre.

Well done Teemu!